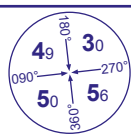


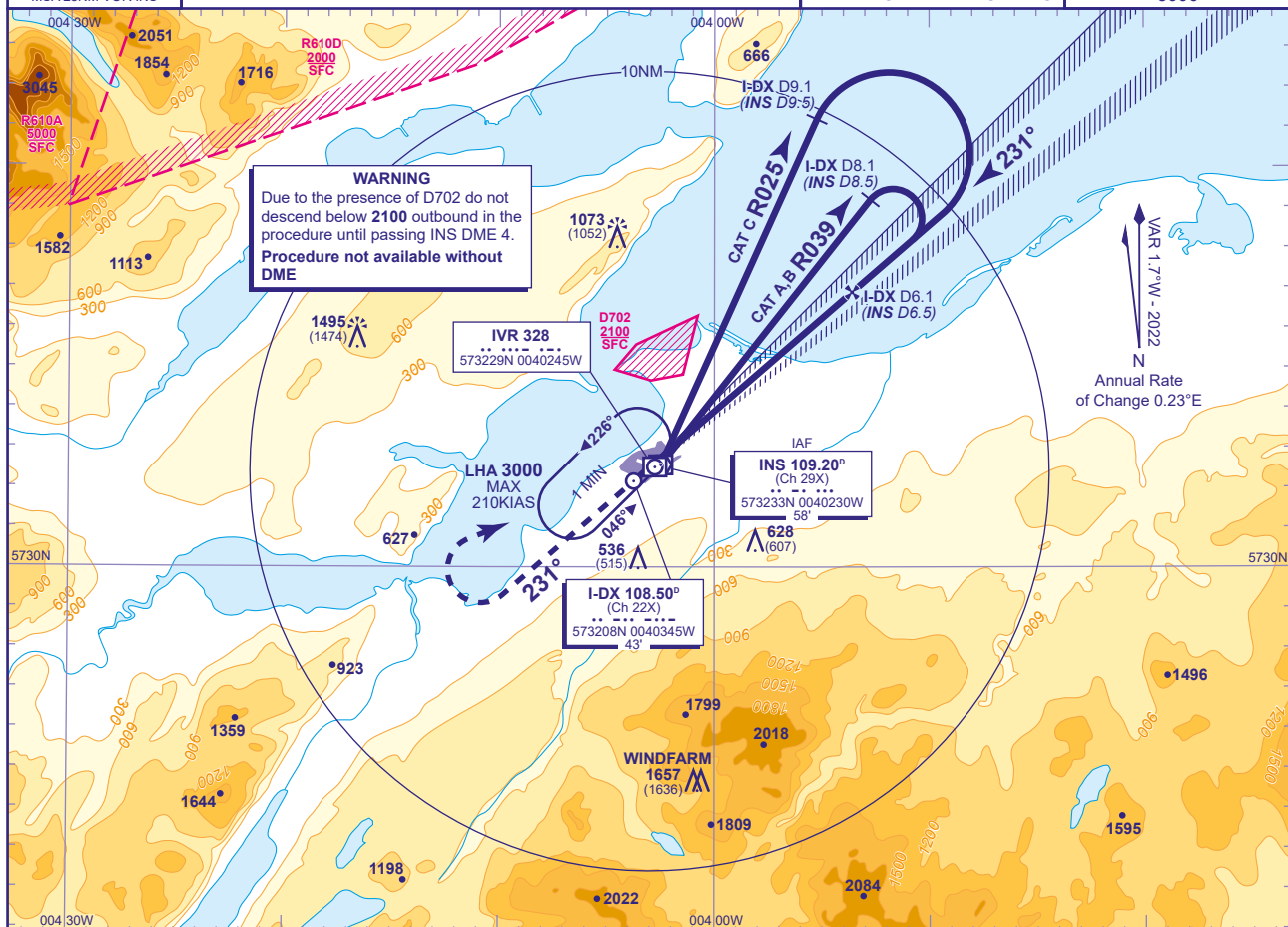
INVERNESS
ILS/DME/VOR
RWY 23
(ACFT CAT A,B,C)



MSA 25NM VOR INS

TWR	118.405	INVERNESS TOWER	AD ELEVATION	31
RAD	122.605	INVERNESS RADAR	THR ELEVATION	21
ATIS	109.200	INVERNESS INFORMATION	OBSTACLE ELEVATION	
			1495 AMSL (1474) (ABOVE THR)	
			BEARINGS ARE MAGNETIC	

TRANSITION ALTITUDE
3000

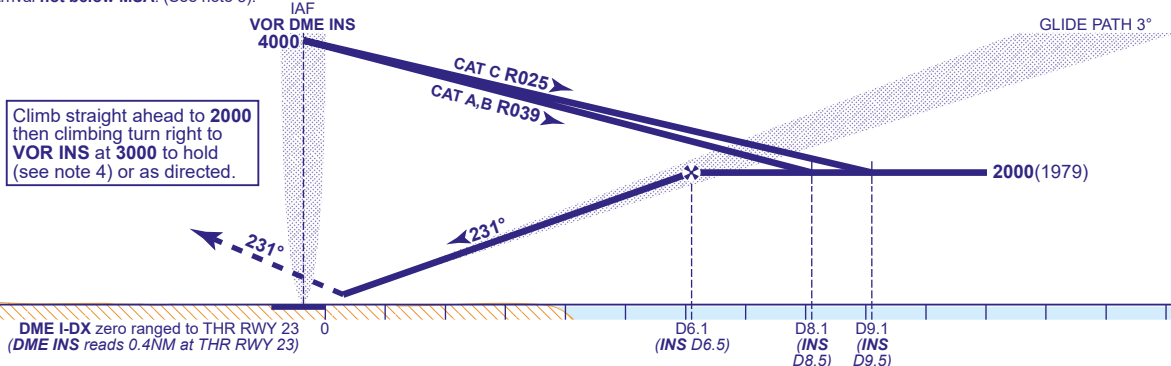


RECOMMENDED PROFILE GLIDE PATH 3°, 320FT/NM

DME I-DX	5	4	3	2	1
ALT(HGT)	1670(1649)	1350(1329)	1030(1009)	710(689)	390(369)

Arrival not below MSA. (See note 3).

RDH 50



Aircraft Category		A	B	C	Rate of descent	50%	50%					
OCA (OCH)	CAT I	177(156)	187(166)	199(178)		G/S KT	160	140	120	100	80	
						FT/MIN	850	750	640	530	430	
VM(C)OCA (OCH AAL)	Total Area	720(689)	840(809)	1400(1369)								
	North of RWY 05/23	490(459)	540(509)	1100(1069)								

NOTE 1 NDB(L) IVR may be used if INS VOR is not available.
2 Lowest altitude to commence procedure from hold is **3000**.
3 Subject to ATC approval, aircraft inbound to VOR/DME INS may descend to **3500** after passing INS DME 10 inbound.
4 Pilots should take account of the climb performance of their aircraft to arrange their flight to reach INS VOR at **3000**.
5 Direct arrivals see chart AD 2-EGPE-8-15.

CHANGE (6/25): FREQUENCIES REVISED. VM(C)OCA(OCH AAL) TOTAL AREA CAT A.